



Company Profile – Basic GS GmbH

*We support your
next level*

2025

Basic GS GmbH ·

Feldstraße 5 · 45739 Oer-Erkenschwick

www.basic-gs.de | info@basic-gs.de



About us

Since 2017, we have been rising to every challenge – reliably, flexibly, and always well equipped. Headquartered in Oer-Erkenschwick, Basic GS GmbH has evolved from a family-run business into a trusted scaffolding partner for clients across Germany and throughout Europe. Our name stands for practical expertise, strong commitment, and scalable solutions – from compact construction sites to large-scale industrial and infrastructure projects.

Supported by a dedicated logistics fleet of more than 60 vehicles and over 4,000 tons of scaffold material, we guarantee fast, flexible, and reliable deployment – wherever and whenever our services are needed.

Across regions and borders, we are committed to reliability, professionalism, and long-term partnership.

Basic GS – your strong partner at every level.

With a team of over 250 skilled employees, we deliver customized scaffolding solutions for the chemical, energy, construction, and industrial sectors.





Committed to Safety

At Basic GS GmbH, safety isn't just a policy – it's our foundation. Before we speak of performance, we focus on protecting people. That's why all our teams take part in monthly rotating safety workshops, ensuring that every crew member stays up to date with the latest safety standards and industry best practices.

Every new scaffolder begins with intensive hands-on training at our own facilities – including in-house training halls and logistics areas – before they ever set foot on a construction site. This ensures our teams are not only prepared, but aligned with our company-wide standards of safety, quality, and performance.



 Take a closer look at our safety training in action:





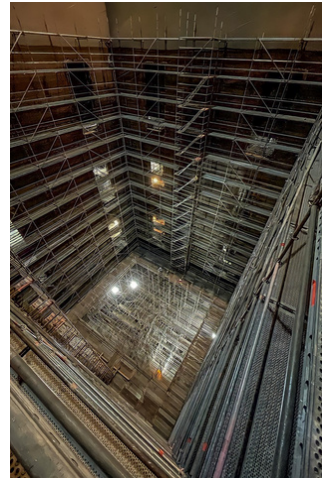
Scaffolding System



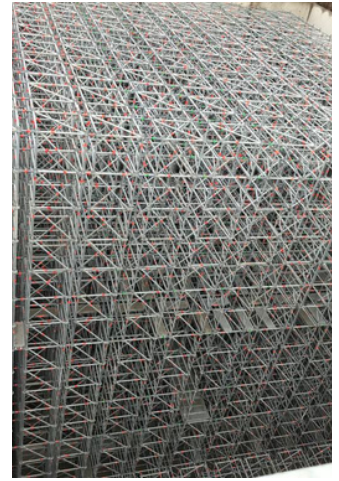
Facade scaffolding



Suspended scaffolding



Industrial scaffolding



Heavy-duty scaffolding

- Work scaffolding
- Protective scaffolding
- Load-bearing scaffolding / Support scaffolding
- Mobile scaffolding / Rolling towers (
- Fixed scaffolding / Stationary scaffolding
- Suspended scaffolding
- Inspection and surveying

- Steel tube and coupler scaffolding
- Ladder scaffolding
- Frame and modular scaffolding systems
- Transport and storage
- Assembly and dismantling
- Anchoring scaffolding to the structure
- Maintenance of scaffolding components

We Don't Just Build – We Train

Certified Apprenticeships & Training Programs:

- Scaffolder
- Office Clerk

In-house Courses & Safety Certifications:

- First Aid courses
- Forklift license
- Aerial work platform certification
- Construction site safety training
- Regular safety refreshers & workshops





Growing across Europe – with strong foundations

Driven by continuous growth and a proven record of successful projects, Basic GS GmbH, headquartered in Germany, is steadily expanding its reach across Europe.

With trusted subsidiaries in strategically important regions, we ensure that our standards of safety, quality, and efficiency are upheld internationally – while remaining adaptable to local markets and requirements.

Our international branches:

- Basic GS Insaat Ltd. Sti. – Turkey
- Basic GS BEL – Belgium
- KZC Basic GS Romserv S.R.L – Romania



We build across borders – with the same commitment, values, and expertise that define us in every project.

Partner Companies



Experts in industrial insulation and sheet metal solutions, providing comprehensive services from planning and fabrication to on-site installation.



innovative manufacturer of high-performance construction chemicals, offering over 300 products for waterproofing, insulation, and concrete repair.



**BASIC GS
GMBH**
SINCE 2017

BASIC GS GmbH
Gerüstbau - Industrieservice



REFERENCES



References

Germany

Industry / Refinery & Chemical Sector

- **BASF SE – Ludwigshafen**

The world's largest integrated chemical production site.

- **Shell Energy and Chemicals Park Rheinland (Wesseling/Godorf)**

A major refining and energy complex transitioning to low-emission production.

- **Bayer AG – Leverkusen (CHEMPARK)**

Headquarters of Bayer and a major European chemical cluster.

- **thyssenkrupp Steel Europe – Duisburg**

The largest steel production site in Europe.

- **Industriepark Höchst – Frankfurt am Main**

One of Europe's most important pharmaceutical and chemical parks, home to over 90 companies.

- **Chemiepark Marl (Evonik)**

A major industrial park with over 10,000 employees and 100+ production facilities.

- **INEOS Phenol – Gladbeck**

Europe's leading phenol production facility.

- **Covestro – Brunsbüttel**

Specialist in high-performance polymers and raw materials.

- **Ruhr Oel GmbH / BP – Gelsenkirchen (Horst & Scholven)**

A complex refining and petrochemical site with high output capacity.

- **BP Refinery – Lingen**

One of BP's key refinery locations in western Germany.

- **Nynas GmbH & Co. KG – Hamburg**

Specializing in bitumen and industrial process oils.

- **Yara – Brunsbüttel**

Production site for fertilizers and industrial chemicals.

- **HOLBORN Europa Raffinerie GmbH – Hamburg**

Regional refinery for fuels and heating oil in northern Germany.



Power plants

RWE Power AG

- **Neurath Power Plant**

One of the largest lignite-fired power stations in Europe (Net output: ~2,100 MW).

- **Niederaußem Power Plant**

Traditional lignite site with several units, known for its innovative emission reduction technologies.

- **Weisweiler Power Plant**

Approx. 1,995 MW capacity, supplies large parts of western Germany.

- **Hambach Mine**

One of Europe's largest open-pit lignite mines.

- **Garzweiler Mine**

Supplies up to 25 million tons of lignite annually, directly linked to Neurath and Niederaußem.

- **Inden Mine**

Delivers lignite directly to Weisweiler via conveyor systems.

Uniper (previous E.ON)

- **Datteln 4 Power Plant**

Ultra-modern hard coal power plant, one of the most efficient in Europe (~1,050 MW).

Siemens / STEAG / Stadtwerke Düsseldorf

- **GuD Power Plant Herne (Herne 6)**

Combined cycle gas turbine plant (CCGT) with high efficiency and district heating.

- **GuD Power Plant Düsseldorf (Lausward – Block Fortuna)**

World-record efficiency (61.5%), highly modern gas & steam power plant.

Municipal & Waste-to-Energy Plants (MHKW / AGR)

- **Waste Incineration Plant – Frankfurt (MHKW FFM)**

High-tech thermal waste treatment with energy recovery.

- **Waste Incineration Plant – Wiesbaden (MHKW Wiesbaden)**

New generation plant for energy-from-waste and safe disposal.

- **AGR Waste Incineration Plant – RZR Herten**

Waste-to-energy facility serving the Ruhr area, with combined power and heat output.

Heidelberg Materials

- **Cement Plant(s)**

Industrial cement production sites across Germany – key supplier in the building materials sector.



Special Projects & Infrastructure

Research & Education

- **FAIR GmbH – Facility for Antiproton and Ion Research (Darmstadt)**

Large-scale international science campus under construction.

- **Bergische Universität Wuppertal**

Scaffolding services for campus buildings.

- **Heinrich Heine University Düsseldorf**

Support structures for renovation and expansion works.

Infrastructure & Public Projects

- **Metro Project U5 – Europaviertel Frankfurt**

Tunneling and construction support for new metro line.

- **Leverkusen Rhine Bridge**

Structural scaffolding during replacement of motorway bridge.

- **Schiersteiner Bridge – Wiesbaden**

Bridge access scaffolding for reconstruction project.

- **Salzbachtal Bridge – Wiesbaden**

Heavy scaffolding solutions for demolition and new construction.

- **Drewer Bridge – Marl**

Canal bridge works supported by temporary scaffold structures.

Commercial & Logistics Projects

- **Data Center – Frankfurt Griesheim**

Scaffolding services for large-scale server infrastructure.

- **Hertener Höfe – Herten**

Retail and office complex with facade and access scaffolding.

Projects Outside Germany

Various other projects

- **Project One – INEOS, Antwerp, Belgium**

Scaffolding services for one of Europe's most modern and significant petrochemical projects.

- **Chemelot Industrial Park – Geleen, Netherlands**

Scaffolding services within one of Europe's major chemical clusters.

- **Yara Sluiskil B.V. – Netherlands**

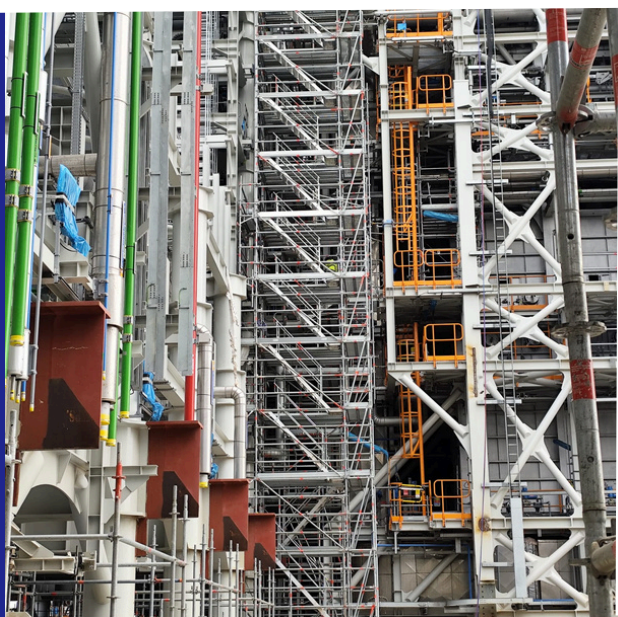
Industrial scaffolding at a leading fertilizer and ammonia production site.

- **E.ON Power Plant – Maasvlakte, Rotterdam**

Support structures for maintenance and upgrades at a large coal and biomass power plant.

- **TAL – Austria**

Tank scaffolding



**Project ONE
INEOS**



**FAIR GmbH – Facility for
Antiproton and Ion
Research (Darmstadt)**





Hertener Höfe – Herten

Austria TAL





RWE Power AG





Project YARA Sluiskil





**Siemens
GuD Power Plant Herne
(Herne 6)**

Contact Us

OUR INFORMATION



Adress

Feldstraße 5
45739 Oer-Erkenschwick



Phone

+49 2368 9694 330



E-mail

info@basic-gs.de

Commercial Register:

Registered with the District Court of
Recklinghausen

Registration Number: [HRB 8888]

VAT Identification Number pursuant to § 27 a
German VAT Act:

DE 340/5703/5226

Represented by Gülay Kuzucu, Owner



More Information:

www.basic-gs.de